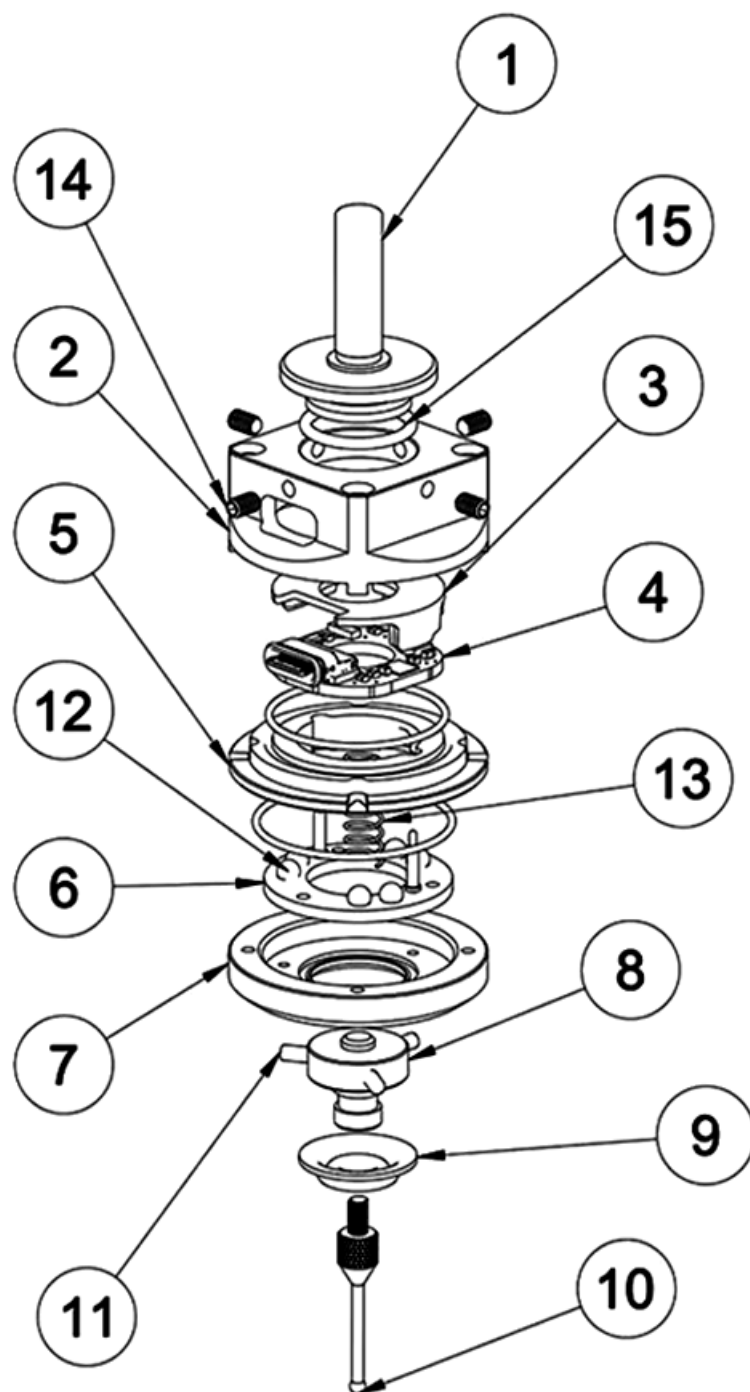
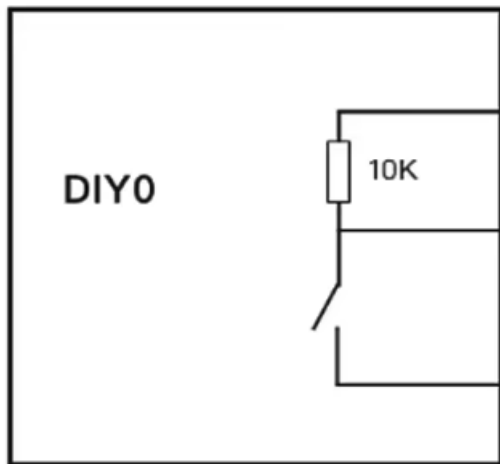


SN	Name	Material
1	6mm Handle	Stainless Steel
2	Shell A	Aluminum
3	Support A	ABS
4	Main PCBA	PCB
5	Support B	ABS
6	Beads PCB	PCB
7	Shell B	Aluminum
8	Stylus Holder	POM
9	Silicone Holder	Silicone
10	Stylus	Stainless Steel
11	Needle	Gold-plated
12	Bead	Carbon Steel
13	Spring	Steel
14	Set Screws	Stainless Steel
15	O-ring	Silicone



Three Wire NPN-NO



VCC

Red Wire

Connect to Power 5-24V

IO (OUT)

Yellow Wire

Singnal Output

GND

Black Wire

Ground or 0V

GND/COM-/DCM

(When power on, the green light is always on, and after the probe is triggered, the red light is on.)

